

RiSOLVE

for 3D Digital Scene Capture

- **fully automatic registration**
- **fastest true-color scanning workflow**
- **calibration, registration, and filtering tools**
- **2D measureable PDF plots**
- **simple data export**

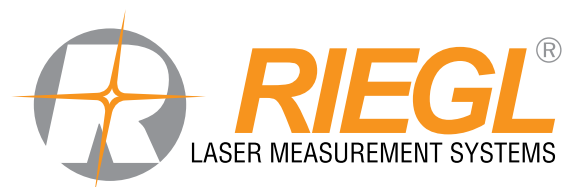
Combined with the one-touch workflow of the **RIEGL V-Line** terrestrial laser scanners, RiSOLVE enables fully automatic registration and colorization of scan data. This streamlined process is the fastest solution to acquire, register, and colorize outdoor 3D scan data. With additional tools for filtering, scene animation and measurements, RiSOLVE enables rapid turnaround of critical information.

RiSOLVE takes the complexity out of the registration process by utilizing positioning information provided by sensors integrated into VZ-Line scanners. The combination of basic position estimation utilizing this onboard sensor data along with a new algorithm for aligning scans without reflectors or precise positioning enables a final, fine adjustment of all scans to produce a seamless, fully registered point cloud.

By automatically registering, adjusting, and colorizing scans, RiSOLVE simplifies the 'field to office' exchange and provides the fastest workflow for true-color 3D Scene Scanning. In addition to automation, RiSOLVE provides tools for point cloud filtering, 2D PDF generation and creation of panoramic animations.

- **Accident Investigation**
- **Architecture**
- **Rapid Deployment Scene Capture**
- **Emergency Management Planning**
- **Local Area Mapping**
- **Utility Asset Mapping**

visit our website www.riegl.com





Scan

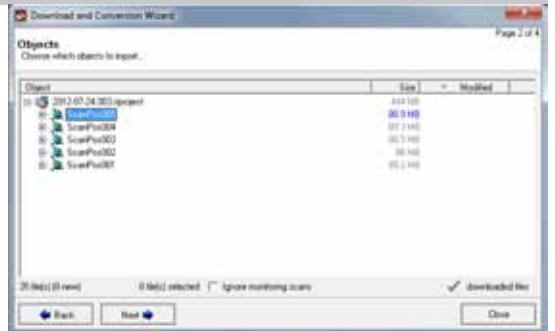
- 10 million measurements
- 5 high-resolution images
- precise inclination data
- GPS position
- compass bearing

**3 minutes
per position**



Import

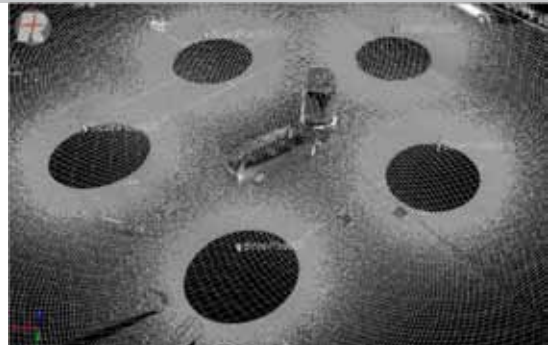
**1 minute
per position**



Register

- Automatic Registration:
- 1) position estimation via: inclination, GPS & compass
 - 2) course registration
 - 3) fine tuned adjustment

**less than
1 minute
per position**



Color

- One-Click Color:
- utilizes calibrated images
 - automatically adjusts
 - colorizes point cloud

**less than
1 minute
per position**



Plot

- automatically selects region
- exportable to PDF
- plot to image



see the video: www.youtube.com/user/riegllms



RIEGL Laser Measurement Systems GmbH, 3580 Horn, Austria
 Tel.: +43-2982-4211, Fax: +43-2982-4210, E-mail: office@riegl.co.at
 RIEGL USA Inc., Orlando, Florida 32819, USA
 Tel.: +1-407-248-9927, Fax: +1-407-248-2636, E-mail: info@rieglusa.com
 RIEGL Japan Ltd., Tokyo 1640013, Japan
 Tel.: +81-3-3382-7340, Fax: +81-3-3382-5843, E-mail: info@riegl-japan.co.jp

www.riegl.com